

- SECTION 1 - FRENCH ALPINES
- SECTION 2 - LAMANCHA
- SECTION 3 - NIGERIAN
- SECTION 4 - NUBIAN
- SECTION 5 - OBERHASLI
- SECTION 6 - AOP (All Other Purebreds)
- SECTION 7 - RECORDED GRADES

PREMIUMS: \$15, \$12, \$10 \$8, \$6, \$4

**SENIOR SHOW CLASSES** (All animals shown in Senior Show must be in Milk or have been in Milk)

1. Doe under 2 years in milk.
2. Doe 2 years and under 3 years.
3. Doe 3 years and under 4 years.
4. Doe 4 years and under 5 years.
5. Doe 5 years and over
6. **Sr. Grand Champion**.....Rosette
7. **Sr. Reserve Grand Champion** .....Rosette
8. **Champion Challenge Class**
- 9.\* Senior Get of Sire, Three Does the Get of one Sire, Sire must be named.
- 10.\* Dam and daughter, Dam must be named.
- 11\* Produce of Dam, Two Does the Produce of One Dam, Dam must be named.
12. Best Three Does owned by Exhibitor.
13. Udder class - Doe in milk judged on udder alone.

**JUNIOR SHOW CLASSES**

14. Junior Kid, born April 1 to July 15 current year.
15. Intermediate Kid, born March 1 to 31 current year.
16. Senior Kid, born Jan. 1 to Feb. 29 current year.
17. Junior Yearling, born Aug. 1 to Dec. 31, previous year.
18. Senior Yearling, 1 year old and under 2 years not in milk.
19. **Jr. Grand Champion**.....Rosette
20. **Jr. Reserve Champion**.....Rosette
- 21.\* Junior Get of Sire, Three Does the Get of one Sire, Sire must be named.
- 22.\* Junior Produce of Dam.

**SECTION 8 - CLASS 1 - Best 4 Sr. Does Any Breed, Any Age, owned by one exhibitor (one entry per exhibitor)**

This class will follow the Sr. Doe Show

PREMIUMS: \$15, \$12, \$10, \$8, \$6, \$4

CLASS 2 - Best Doe in Sr. Show - Rosette

CLASS 3 - Best Doe in Jr. Show - Rosette

\*Entries are not required to be owned by exhibitor.

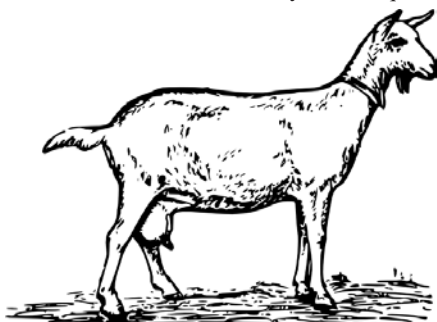
**SECTION 9 - GOAT COSTUME CLASS 1**

Following the Jr. Doe Show

Premiums \$12, \$10, \$8, \$7, \$6, \$5, \$4, \$3

This class open to all ages. Goats and showmen should be dressed in costume to portray a special theme, such as beauty, humor, history or any other. Theme to be named.

All exhibits **MUST** have shown in Junior Fair or Open Classes to be eligible for Costume Class. No entry fee is required.



**SWINE**

**Department 8**

Director in Charge: Doug Logan

Open Swine Show

Thursday, September 3, 2020

7 p.m. - Arena

Entry fee: 10 percent of first premium  
 Premiums: \$15, \$10, \$8, \$5, \$4, \$3, \$2, \$1

Entries close at 4 p.m., Wednesday, August 12, 2020

Director will split classes by weight and number of entries, after weigh-in.

Entries must stay on grounds until 8 p.m. Monday. No unworthy exhibits shall receive a premium.

All swine may be subject to inspection by official fair veterinarian at time of entrance to the grounds. The management reserves the right to take any additional measures to protect the health of swine shown at the Fair. All exhibitors must follow Animal Health Rules. Director has right to refuse any entry.

Exhibitors must furnish own bedding

This is a Terminal Show

Jr. Fair Exhibitors Animals Only in Open Class

SECTION 1 - MARKET HOG SHOW (Classes 1)

Premiums in each class: \$15, \$10, \$8, \$5, \$4, \$3, \$2, \$1

All breeds may compete in this show.

Class 1. Enter all weights - weight classes will be determined by number of exhibits in each weight class.

7. **Champion Market Hog** ..... Rosette and \$30
8. **Reserve Champion** ..... Rosette and \$20

**POULTRY**

**Department 9**

Directors in Charge: Curt Canfield and Wendy Anderson

Open Poultry Show

Saturday, September 5, 2020

9 a.m. - Poultry Barn

Entry fee: 25 cents per bird; 50 cents per pen;  
 50 cents per pigeon

Entries close at 4 p.m., Wednesday, August 12, 2020

**ALL POULTRY MUST BE TESTED FOR PULLORUM**

Free Pullorum Testing available at Poultry Barn 5 - 8 p.m. Wednesday. Limited to 7 birds per exhibitor. If additional birds need tested, it must be done prior to fair.

Director reserves the right to limit number of birds due to space.

All birds must be in place by Midnight on Wednesday.

Poultry must remain in pens until 8 p.m. on Monday.

All animals must be off grounds by Noon on Tuesday.

1. Competition is open to citizens of Geauga and surrounding counties. Limit of 40 birds per exhibitor. Director has right to refuse any entry.

2. No birds under 3 months of age accepted.
3. Birds entered singly cannot compete in pens. Birds entered in pens cannot compete singly. A pen is 1 male and 2 female birds.
4. All specimens shall be exhibited in their natural conditions.
5. No specimens allowed in hall but those that are perfectly healthy, and have been entered in the books of the Secretary. The rule will be strictly adhered to, see "Animal Health Rules."
6. The Society will furnish coops for exhibits.
- 7. All exhibitors must provide food and bedding for their exhibits. Exhibitors failing to do so will be removed from the fair grounds, barred from competition and or shall forfeit all premiums that may have been awarded to them.**
7. The general rules of the Society will govern Poultry exhibits. This rule will be strictly adhered to.
- 9. Cages and feeding devices must be cleaned before release of any Poultry. Failure to do so shall forfeit all premiums that may have been awarded to them.**
10. No premiums will be paid on birds not listed.
11. No Pens of Bantams, Turkeys or Ducks.
12. All pens will be assigned previous to the Fair.
13. First and Second prize money and all ribbons only will be awarded to an exhibitor when there is no competition.
14. A.O.V. means any other variety in the APA/ABA Standard of Perfection. All classes are based on the APA/ABA Standard of Perfection.
15. All birds must be in good health upon arrival at fair and maintain good health throughout the fair.
16. All poultry incorrectly entered will be judged out of class. No premiums will be paid.
17. If Junior Fair poultry is entered in an open class also, it must be penned in the open pen provided by Senior Fair Board.

**Premiums on Single Entries.....\$3, \$2**  
**Premiums on Pens.....\$4, \$3**  
**Best Female (Section 8, 9, 10)..... Rosette and \$10**  
**Best Male (Section 8, 9, 10) ..... Rosette and \$10**

### SECTION 1 - STANDARD POULTRY CLASSES

You must list on your entry blank the type of entry you have in each class such as: Group 1 - Cock, Group 2 - Hen, Group 3 - Cockerel, Group 4 - Pullet, Group 5 - Young Pen, Group 6 - Old Pen.

**Example: a Barred Plymouth Rock that is a Cockerel;**

<b>Dept.</b>	<b>Sect.</b>	<b>Class</b>	<b>Group</b>
<b>9</b>	<b>1</b>	<b>001</b>	<b>3</b>

### AMERICAN CLASSES

Class	Class
001. Barred Plymouth Rock	012. Single Comb Rhode Island Red
002. White Plymouth Rock	013. Rose Comb Rhode Island Red
003. Buff Plymouth Rock	014. Buckeyes
004. Partridge Plymouth Rock	015. Black Jersey Giant
005. A.O.V. Plymouth Rock	016. White Jersey Giant
006. Dominique	017. New Hampshire Red
007. Silver Laced Wyandotte	018. Commercial Rhode Island Red
008. Golden Laced Wyandotte	019. Commercial New Hampshire Red
009. Black Wyandotte	020. A.O.V. American
010. White Wyandotte	
011. A.O.V. Wyandotte	

### ASIATIC CLASSES

021. Light Brahma	026. White Cochin
022. Dark Brahma	027. Black Langshan
023. Buff Brahma	028. White Langshan
024. Buff Cochin	029. A.O.V. Asiatic
025. Black Cochin	

### ENGLISH CLASSES

Class	Class
030. A.O.V. Dorking	034. A.O.V. Sussex
031. Buff Orpington	035. A.O.V. Cornish
032. A.O.V. Orpington	036. Black Australorps
033. Speckled Sussex	037. A.O.V. English

### MEDITERRANEAN CLASSES

038. Single Comb Dark Brown Leghorn	046. Rose Comb White Leghorn
039. Single Comb Light Brown Leghorn	047. Rose Comb Buff Leghorn
040. Single Comb White Leghorn	048. Rose Comb Black Leghorn
041. Single Comb Buff Leghorn	049. A.O.V. Rose Comb Leghorn
042. Single Comb Black Leghorn	050. A.O.V. Minorea
043. A.O.V. Single Comb Leghorn	051. Blue Andalusian
044. Rose Comb Dark Brown Leghorn	052. A.O.V. Ancona
045. Rose Comb Light Brown Leghorn	053. White Faced Black Spanish
	054. Sicilian Buttercup
	055. A.O.V. Mediterranean

### CONTINENTAL CLASSES

056. Silver Campine	064. A.O.V. Non-bearded Polish
057. Golden Campine	065. Bearded White Polish
058. Silver Spangled Hamburg	066. Bearded Buff Laced Polish
059. Golden Spangled Hamburg	067. A.O.V. Bearded Polish
060. A.O.V. Hamburg	068. Salmon Faverolle
061. White Crested Black Polish	069. A.O.V. Continental
062. Non-bearded Buff Laced Polish	
063. Non-bearded White Polish	

### ALL OTHER STANDARD BREEDS

070. A.O.V. Modern Game	077. Frizzles
071. A.O.V. Old English Game	078. Naked Neck
072. Black Sumatra	079. A.O.V. Araucana
073. A.O.V. Malay	080. A.O.V. Ameraucana
074. A.O.V. Cubalaya	081. Sultan
075. A.O.V. Yokohamas	082. A.O.V. All Other Standard Breeds
076. A.O.V. Phoenix	

### SECTION 2 - BANTAM POULTRY CLASSES

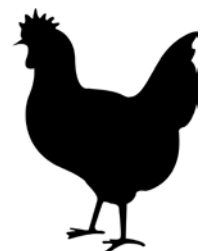
You must list on your entry blank the correct group number **AFTER** the class number. Group 1 - Cock, 2 - Hen, 3 - Cockerel, 4 - Pullet.

### MODERN GAME

001. Black Breasted Red Modern Game
002. Red Pyle Modern Game
003. A.O.V. Modern Game

### OLD ENGLISH GAME

004. Black O.E. Game	007. Silver Duckwing O.E. Game
005. Black Breasted Red O.E. Game	008. A.O.V. Old English Game
006. Red Pyle O.E. Game	



### SINGLE COMB CLEAN LEG

- |                                      |                                   |
|--------------------------------------|-----------------------------------|
| 009. Barred Plymouth Rock            | 018. Single Comb A.O.V. Leghorn   |
| 010. White Plymouth Rock             | 019. Black-Tailed White Japanese  |
| 011. Partridge Plymouth Rock         | 020. Black-Tailed Buff Japanese   |
| 012. A.O.V. Plymouth rock            | 021. Grey Japanese                |
| 013. Single Comb Rhode Island Red    | 022. Black Japanese               |
| 014. New Hampshire                   | 023. A.O.V. Japanese              |
| 015. Single Comb White Leghorn       | 024. A.O.V. Naked Neck            |
| 016. Single Comb Dark Brown Leghorn  | 025. A.O.V. Single Comb Clean Leg |
| 017. Single Comb Light Brown Leghorn |                                   |

### ROSE COMB CLEAN LEG

- |                                   |                                 |
|-----------------------------------|---------------------------------|
| 026. Rose Comb Rhode Island Red   | 036. Rose Comb A.O.V. Leghorn   |
| 027. Black Wyandotte              | 037. Golden Seabright           |
| 028. Partridge Wyandotte          | 038. Silver Seabright           |
| 029. White Wyandotte              | 039. Black Rosecomb             |
| 030. Columbian Wyandotte          | 040. A.O.V. Rosecomb            |
| 031. A.O.V. Wyandotte             | 041. Dominique                  |
| 032. Silver Spangled Hamburg      | 042. Belgium Bearded d'Anvers   |
| 033. A.O.V. Hamburg               | 043. A.O.V. Rose Comb Clean Leg |
| 034. Rose Comb Dark Brown Leghorn |                                 |
| 035. Rose Comb Light Brown        |                                 |

### ALL OTHER COMB CLEAN LEG

- |                     |                                      |
|---------------------|--------------------------------------|
| 044. Dark Cornish   | 050. Bearded Polish                  |
| 045. A.O.V. Cornish | 051. Non-bearded Polish              |
| 046. Araucana       | 052. Buckeye                         |
| 047. Ameraucana     | 053. A.O.V. All Other Comb Clean Leg |
| 048. Sumatra        |                                      |
| 049. Malay          |                                      |

### FEATHER LEG

- |  |   |
|--|---|
| 054. Buff Brahma                         | 064. Booted                                     |
| 055. Dark Brahma                         | 065. Black Silkie (Bearded and Non-bearded)     |
| 056. Light Brahma                        | 066. White Silkie (Bearded and Non-bearded)     |
| 057. A.O.V. Brahma                       | 067. Partridge Silkie (Bearded and Non-bearded) |
| 058. Black Cochin                        | 068. A.O.V. Silkie (Bearded and Non-bearded)    |
| 059. White Cochin                        | 069. Frizzles                                   |
| 060. Buff Cochin                         | 070. A.O.V. Feather Leg                         |
| 061. A.O.V. Cochin                       |   |
| 062. Mille Fleur Belgium Bearded d'Uccle |   |
| 063. A.O.V. Belgium Bearded d'Uccle      |   |

### SECTION 3 - GEESE CLASSES

You must list on your entry blank the correct group number **AFTER** the class number. Group 1 - Old Goose, 2 - Old Gander, 3 - Young Goose, 4 - Young Gander.

#### HEAVY CLASSES

- | Class         | Class        |
|---------------|--------------|
| 001. Toulouse | 003. African |
| 002. Embden   |              |

#### MEDIUM CLASSES

- |                         |                    |
|-------------------------|--------------------|
| 004. Sebatopol          | 006. American Buff |
| 005. Pilgrim Pomeranian | 007. Saddleback    |

#### LIGHT CLASSES

- |                   |               |
|-------------------|---------------|
| 008. China        | 010. Canada   |
| 009. Tufted Roman | 011. Egyptian |

### SECTION 4 - DUCK CLASSES

You must list on your entry blank the correct number **AFTER** the class number. Group 1 - Old Drake, 2 - Old Hen, 3 - Young Drake, 4 - Young Hen.

#### HEAVY CLASSES

- |                    |                       |
|--------------------|-----------------------|
| 001. Pekin         | 005. Black Muscovy    |
| 002. Aylesbury     | 006. A.O.V. Muscovy   |
| 003. Rouen         | 007. Saxon            |
| 004. White Muscovy | 008. Silver Appleyard |

#### MEDIUM CLASSES

- |                    |                   |
|--------------------|-------------------|
| 009. Cayuga        | 012. Blue Swedish |
| 010. White Crested | 013. Buff         |
| 011. Black Crested |                   |

#### LIGHT CLASSES

- |                            |                     |
|----------------------------|---------------------|
| 014. Fawn and White Runner | 017. A.O.V. Runner  |
| 015. White Runner          | 018. Khaki Campbell |
| 016. Penciled Runner       | 019. Magpie         |

#### BANTAM DUCKS

- |                  |                         |
|------------------|-------------------------|
| 020. Grey Call   | 025. Black East Indie   |
| 021. White Call  | 026. Grey Mallard       |
| 022. Snowy Call  | 027. Snowy Mallard      |
| 023. Pastel Call | 028. Mandarin Duck      |
| 024. A.O.V. Call | 029. Carolina Wood Duck |

### SECTION 5- TURKEY CLASSES

You must list on your entry blank the correct group number **after** the class number. Group 1 - Old Gobbler, 2 - Old Hen, 3 - Young Gobbler, 4 - Young Hen.

- | Class              | Class              |
|--------------------|--------------------|
| 001. Bronze        | 004. Royal Palm    |
| 002. White Holland | 005. A.O.V. Turkey |
| 003. Bourbon Red   |                    |

### SECTION 6 - GUINEA CLASSES

You must list on your entry blank the correct group number **after** the class number. Group 1 - Old Cock, 2 - Old Hen, 3 - Young Cock, 4 - Young Hen.

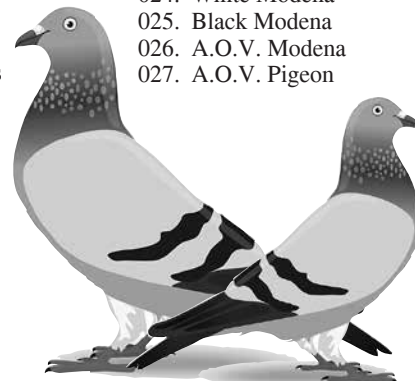
- |               |             |
|---------------|-------------|
| 001. White    | 003. Pearl  |
| 002. Lavender | 004. A.O.V. |

### SECTION 7 - PIGEONS CLASSES

You must list on entry blank the correct group number **AFTER** the class number. Group 1 - Cock, 2 - Hen.

#### Entry Fee 50¢ each

- | Class               | Class               |
|---------------------|---------------------|
| 001. Red Fantail    | 020. White King     |
| 002. White Fantail  | 021. White Runt     |
| 003. Blue Fantail   | 022. Kormornor      |
| 004. Black Fantail  | 023. Oriental Frill |
| 005. Yellow Fantail | 024. White Modena   |
| 006. Silver Fantail | 025. Black Modena   |
| 007. A.O.V. Fantail | 026. A.O.V. Modena  |
| 008. A.O.V. Homers  | 027. A.O.V. Pigeon  |
| 009. Black Jacobin  |                     |
| 010. White Jacobin  |                     |
| 011. A.O.V. Jacobin |                     |
| 012. Pigmy Pouter   |                     |
| 013. Blue Pouter    |                     |
| 014. Red Pouter     |                     |
| 015. A.O.V. Pouter  |                     |
| 016. Racer          |                     |
| 017. Roller         |                     |
| 018. Tumbler        |                     |
| 019. Parlor Tumbler |                     |



### SECTION 8

- 0011 Best Female (Sections 1 and 2) . . . . . Rosette + \$10
- 0021 Best Male (Sections 1 and 2) . . . . . Rosette + \$10

### SECTION 9

- 0011 Best Female (Sections 3 and 4) . . . . . Rosette + \$10
- 0021 Best Male (Sections 3 and 4) . . . . . Rosette + \$10

### SECTION 10

- 0011 Best Female (Sections 5 - 7) . . . . . Rosette + \$10
- 0021 Best Male (Sections 5 - 7) . . . . . Rosette + \$10

## RABBITS

### Department 10

Director in Charge: Mark Shaver

Show Secretaries: Andrea Ballas and Susan Pohto

#### Open Rabbit Show

Saturday, September 5, 2020

8:30 a.m. - Rabbit Barn

Entry fee: Single Rabbit \$1, Rabbit Doe & Litter \$2

Entries close at 4 p.m., Wednesday, August 12, 2020

#### ENTRY RULES FOR RABBITS

1. Animals must be owned by the exhibitor.
2. All exhibitors must be present to show their own rabbits.

**PREMIUMS: 1st - \$5, 2nd - \$3, 3rd - \$2**

**Best Rabbit in Show - Trophy**

**Best of Breed - Rosette - (Will Become Class For Each Breed)**

**Best of Opposite Sex - Rosette**

#### — SHOW RULES —

1. All exhibitors **MUST** complete their own ARBA Remark Card and turn them in by 9:30 p.m. Wednesday night. ARBA Remark Cards will be provided at check in.

2. Any changes to entry must be made at check in and must match the ARBA Remark Card submitted. **NO CHANGES** will be permitted at show time on Saturday morning. Rabbits without remark cards will not be shown.

3. **ALL RABBITS MUST BE PERMANENTLY TATTOOED PRIOR TO FAIR.** Use of felt markers and ballpoint pens are **NOT** considered permanent ear markers.

4. **All rabbit entries must be health checked by the staff and be in their appropriate cages between 4:30 and 9 p.m. Wednesday night before the fair.**

5. No rabbits unless being exhibited are allowed onto the fairgrounds at any time.

6. **Rabbits will be released at 8 p.m. on Monday night, the last day of the fair, in accordance to security measures we have installed.**

7. **All rabbits must be removed from the rabbit building by 9:30 p.m. on Monday evening of the fair.** Any exhibit not removed by 9:30 p.m. on Monday evening will be disposed of at the discretion of the Superintendent.

8. Any exhibitor who removes their rabbit before release time on Monday, the last day of the fair, without permission from the Senior Fair Director will automatically forfeit all premiums.

9. All Exhibitors must furnish own feed. Exhibitors must also furnish containers for feed and water for their animals.

10. **Exhibitors will be held responsible for the care of their animals and cleaning cage trays daily (including Monday night).** Shavings will be provided. Exhibitors failing to properly care for their rabbits may be subject to disciplinary actions.

11. All rabbits **MUST** remain in their assigned cages throughout fair. Exhibitors that remove their rabbits without permission to cages not originally assigned may not be allowed to show in future fairs.

12. You must list on your entry blank the type of entry you have in each class such as: Rabbit Class 001 (American Fuzzy Lop - Broken) and Rabbit Group: Group 1 - Sr. Buck, Group 2 - Sr. Doe, Group 3 - 6/8 Buck, Group 4 - 6/8 Doe, Group 5 - Jr. Buck, Group 6 - Jr. Doe.

### RECOGNIZED BREED CLASSES

#### FOUR GROUP RABBITS

Include Rabbit Group for each class you enter on your entry form:

Group 1 – Sr. Buck, Group 2 – Sr. Doe

Group 5 - Jr. Buck, Group 6 - Jr. Doe

#### SECTION 1 – AMERICAN FUZZY LOP

- 001. Broken
- 002. Solid

#### SECTION 2 - ANGORA

- 001. English - Colored
- 002. English - White
- 003. French - Colored
- 004. French - White
- 005. Satin - Colored
- 006. Satin - White

#### SECTION 3 – BRITANNIA PETITE

- 01. Black
- 02. Blue Eyed White
- 03. Chestnut Agouli
- 04. Otter
- 05. Ruby Eyed White
- 06. Sable Marten

#### SECTION 4 - DUTCH

- 001. Black
- 002. Blue
- 003. Brown Gray
- 004. Chocolate
- 005. Chinchilla
- 006. Steel
- 007. Tortoise

#### SECTION 5 – ENGLISH SPOT

- 001. Black
- 002. Blue
- 003. Chocolate
- 004. Gold
- 005. Gray
- 006. Lilac
- 007. Tortoise

#### SECTION 6 – HARLEQUIN

- 001. Japanese
- 002. Magpie

#### SECTION 7 - HAVANA

- 001. Black
- 002. Blue
- 003. Broken
- 004. Chocolate
- 005. Lilac

#### SECTION 8 - HIMALAYAN

- 001. Black
- 002. Blue
- 003. Chocolate
- 004. Lilac

#### SECTION 9 – HOLLAND LOP

- 001. Broken Pattern
- 002. Solid Pattern

#### SECTION 10 – JERSEY WOOLY

- 001. Agouli
- 002. Broken Pattern
- 003. Self
- 004. Shaded
- 005. Tan Pattern
- 006. AOV

#### SECTION 11 – MINI LOP

- 001. Broken Pattern
- 002. Solid Pattern

#### SECTION 12 – MINI REX

- 001. Black
- 002. Blue
- 003. Broken Group
- 004. Castor
- 005. Chinchilla
- 006. Chocolate
- 007. Himalayan
- 008. Lilac
- 009. Lynx
- 010. Opal
- 011. Otter
- 012. Red
- 013. Sable
- 014. Sable Point
- 015. Seal
- 016. Silver Marten
- 017. Smoke Pearl
- 018. Tortoise
- 019. White